



Tahe

OPPOSITE

HAIR CUT & COLOUR COLLECTION

The
OPPOSITE
HAIR CUT & COLOUR COLLECTION

In homage to beauty in its purest form, OPPOSITE fuses black and white in a captivating play of contrasts to demonstrate the essence of sophistication.

An expression of beauty that defies the rules; a symphony of style and originality with audacious cuts and vibrant tones. An evocation to rediscover timeless beauty and elegance.

Discover the energy of disparity and defy the boundaries with OPPOSITE.



CREATIVE TEAM

IRENE Y FILIPA
José Luis García
[@joseluiscorciapeluqueros](#)

MABROCK Y SAMI
Paco Terrón
[@thegentlebarbershop](#)

EMILCE
Yolanda Gil
[@estilista.yolandagil](#)

IRIS
Raquel Corchero
[@raquelcorchero_](#)

MAKE-UP

Consuelo Ortiz
[@consueortizmakeup](#)

STYLING

Mikoto
[@mikotovill](#)

PHOTOGRAPHY

David Arnal
[@davidarnalteam](#)

ARTISTIC DIRECTION

Jose Ferrer
[@laferrer_y_punto](#)

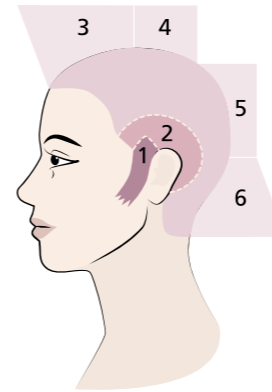


IRENE





IRENE



CUT

In area 1 separate at the temples for disconnection. In area 2 use scissors to cut to the desired length. In areas 3, 4 and 5 cut at a straight angle, directing the front area towards the exterior. In area 6 cut at an exterior angle. Cut the fringe into a V and texturise the whole cut.

COLOUR

High Platinum Cream Bleach + High Platinum Lumière Express Peroxide 20 vol (1+1.5).

On the roots apply 5g Chroma System Organic Care Toner 7.52 + 20g Chroma System Organic Care Clear Toner + 50g de Organic Care Cream 5 vol (1+2).

On the mid-length and ends apply 5g Chroma System Organic Care Toner 7.52 + 40g Chroma System Organic Care Clear Toner + 90g Organic Care Cream 5 vol (1+2).

WASH

Micellar Anti-Pollution Shampoo Organic Care
Shampoo fine hair free from sulfates Nature

CONDITIONING

Colored hair mask Nature

DRYING

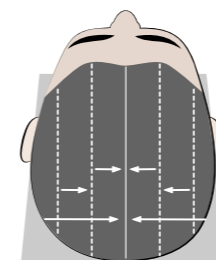
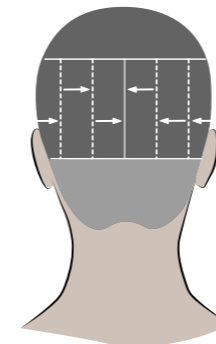
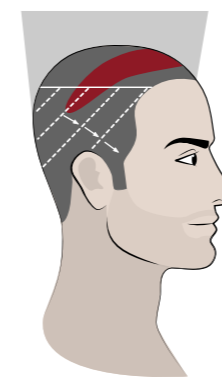
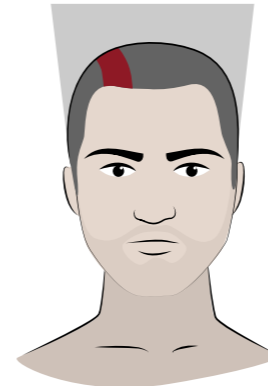
Shaping styling cream Nature

STYLING

Hair wax Nature



SAMI



CUT

In the temple area create diagonals in a series as far as the back area, keeping a triangular area in the line of graduation.
 In the upper area, trace a central guideline and create a variable distribution.
 In the upper back area, create distribution in a series of vertical lines.
 At the back of the neck use the blending technique to create graduation that connects with the back area.

COLOUR

High Platinum Cream Bleach + High Platinum Lumière Express Peroxide 20 vol (1+1.5).
 Tone with Hair Mask with Ionic Fire Red Colour.

WASH

Micellar Anti-Pollution Shampoo Organic Care
 Moisturising Low Poo shampoo Magic Rizos

CONDITIONING

Intensive hair mask 3-in-1 Magic Rizos

DRYING

Curl activator Magic Rizos

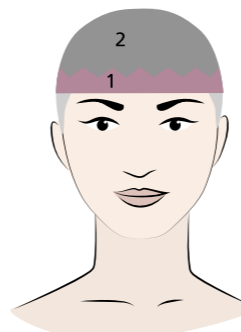
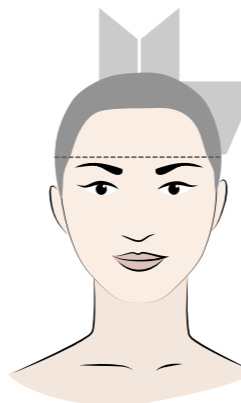
STYLING

Defining hairspray N°351 Booster Spray Advanced Barber





FILIPA



CUT

On the lower and side areas, do a graded cut at 1.5 to 6 mm. Cut at an exterior angle starting at the upper guide strip.

Connect the side area and break with an interior triangle. Create contouring and texturise.

COLOUR

In area 1: 30g Botanic Bleach + 35g de High Platinum Lumière Express Peroxide 10 vol.

Apply colours in blocks:

- Blue: Lumière Express Colour Pigment Pure Blue + Tahe Peroxide 10 vol (1+1).

- Pink: 20g Lumière Express Colour 7.67 + 10g de 7.77 + 30g de Tahe Peroxide 10 vol.

- Violet: Lumière Express Colour 5.76 + Tahe Peroxide 10 vol (1+1).

In area 2, roots and ends: Lumière Express Colour 5.76 + Tahe Peroxide 20 vol (1+1).

WASH

Micellar Anti-Pollution Shampoo Organic Care
Shampoo coloured hair free from sulfates Nature

CONDITIONING

Colored hair mask Nature

DRYING

Styling cream Nature

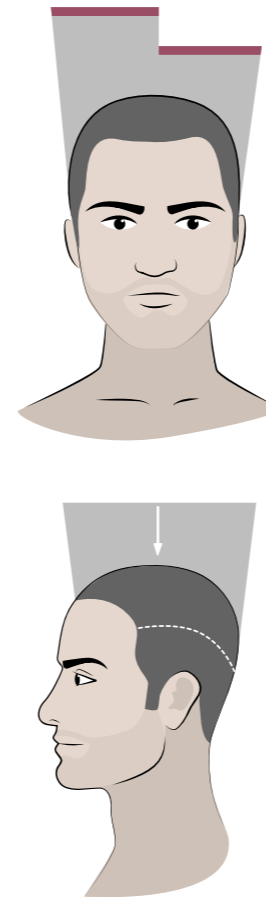
STYLING

Hair serum Nature





MABROCK



CUT

For Afro hair work on the upper area. Use clippers for a freehand cut to create the angles and perfect the shape.

Work at two levels to create disconnection in the cut and a look with more impact.

In the lower side and back areas, blend from 0 until it connects with the bridge that unites the upper and lower areas.

COLOUR

In the upper area of both profiles, High Platinum Colour powder + High Platinum Lumière Express Peroxide 20 vol (1+1.5). Development time 1 hour.

Follow by rinsing the product and softening the tone with Silver Botanic Shampoo.

Tone with 20g Ionic Fire Red Mask and 10g Violet Red.

WASH

Daily use shampoo N°101 Fresh Advanced Barber

CONDITIONING

Hair mask refresh N°201 Fresh Advanced Barber

DRYING

Sea-water hairspray N°321 Sea Water Advanced Barber

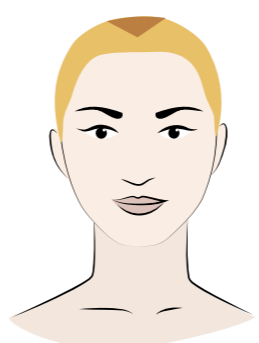
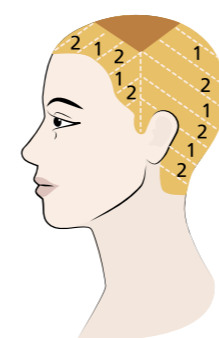
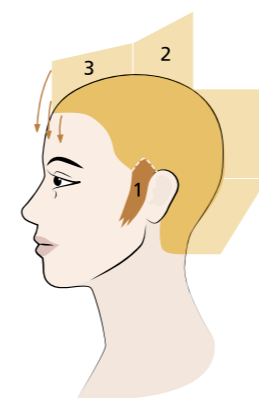


EMILCE





EMILCE



CUT

Separate at the temples for disconnection. In the upper area start at the guide strip and cut at an exterior angle to connect the back area at a straight angle. In area 3 of the fringe, cut at an interior angle and cut in all the contouring.

COLOUR

On the mid-length and ends High Platinum Cream Bleach + High Platinum Lumière Express Peroxide 20 vol (1+1.5).

On the roots High Platinum Cream Bleach + High Platinum Lumière Express Peroxide 10 vol (1+1.5).

On an upper diamond and the rest of the roots, Organic Care colour 7.44 + Organic Care Cream 20 vol (1+1).

Make diagonal blocks and apply on the mid-length and ends, alternating colours 1 and 2:

Colour 1: Organic Care Colour 7.44 + Organic Care Cream 20 vol (1+1).

Colour 2: Organic Care Colour 7.44 + 8.43 + Organic Care Cream 20 vol (1+1).

WASH

Micellar Anti-Pollution Shampoo Organic Care
Ultra hydrating shampoo Low Poo Magic Rizos

CONDITIONING

Intensive hair mask 3-in-1 Magic Rizos

DRYING

Strong-hold mousse Magic Rizos
Restructuring serum Magic Rizos

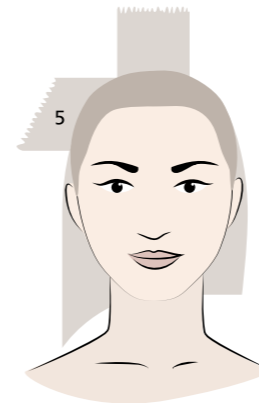
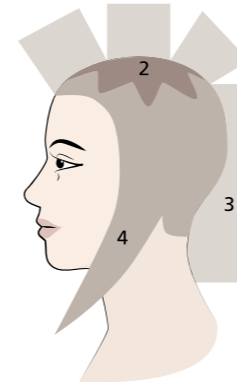
STYLING

LOOK 1: Clean Fixative Botanic Pump Spray.
LOOK 2: Fixing gel Rok-It Botanic Styling





IRIS



CUT

Cut the contours asymmetrically at 0°. Form an upper star and unite it with upper sections. Create the back area over the base.
Shape at the temples with scissors to the desired length. Cut the upper side area at an exterior angle to create volume. Texturise. Cut in all the contouring or fringe area.

COLOUR

On the mid-length and ends High Platinum Cream Bleach + High Platinum Lumière Express Peroxide 10 vol (1+1.5).
On the roots apply Lumière Express Colour 5.56 + Tahe Peroxide 5 vol (1+1).
On the mid-length and ends apply Lumière Express Colour 7.67 + Tahe Peroxide 5 vol (1+1).
On the upper sides intersperse Lumière Express Colour 7.77 + Tahe Peroxide 5 vol (1+1).

WASH

Micellar Anti-Pollution Shampoo Organic Care
Shampoo Original Organic Care

CONDITIONING

Mask Nutritium Organic Care

DRYING

Capillary ointment Infinium Organic Care

STYLING

Hair wax Nature
Powder volumising hairspray Hair Spray





Tahe
OPPOSITE
HAIR CUT & COLOUR COLLECTION

Tahe

BEAUTIFYING YOUR LIFE



tahecosmetics.com