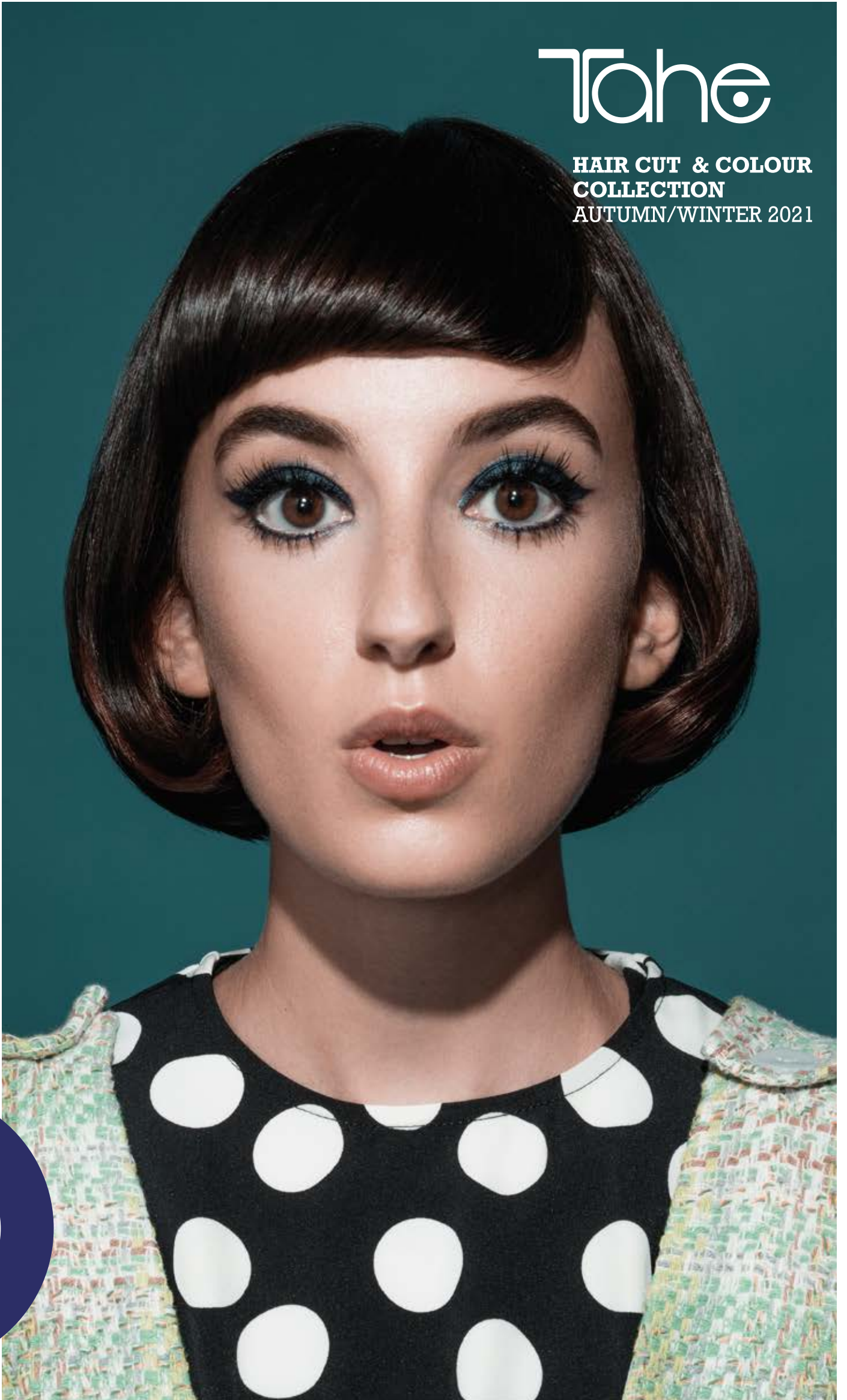


LONDON CLUB



Tahe

HAIR CUT & COLOUR  
COLLECTION  
AUTUMN/WINTER 2021

Take  
**LONDON**  
**CLUB** HAIR CUT & COLOUR  
COLLECTION  
AUTUMN/WINTER 2021



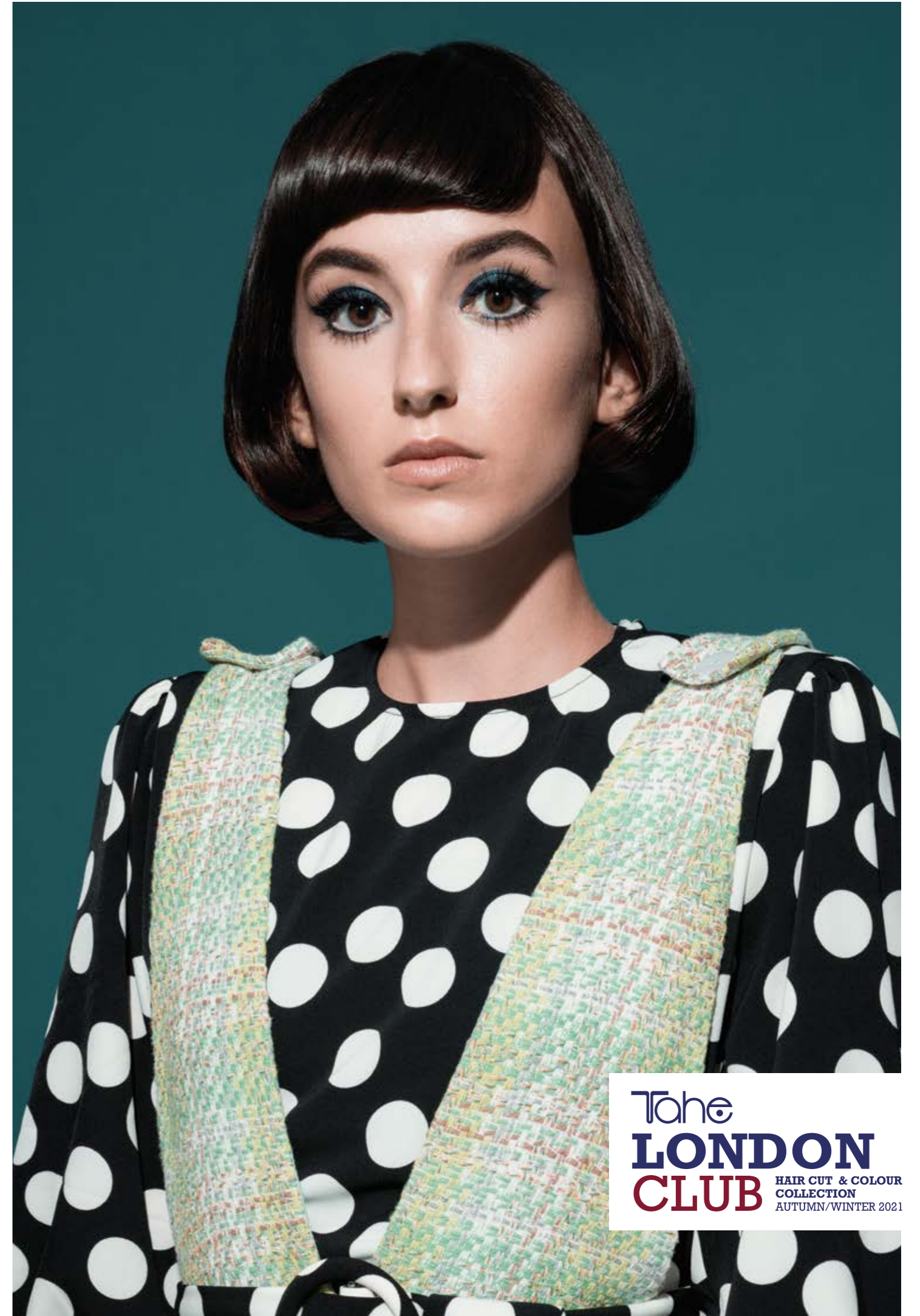
Journey back in time to revive a movement and create new fashion trends.

The *Mod revolution* defined a generation that was thrumming with art, music, creativity and fashion.

**TAHE** reinvents the symbolism of an era with the creation of **LONDON CLUB**.

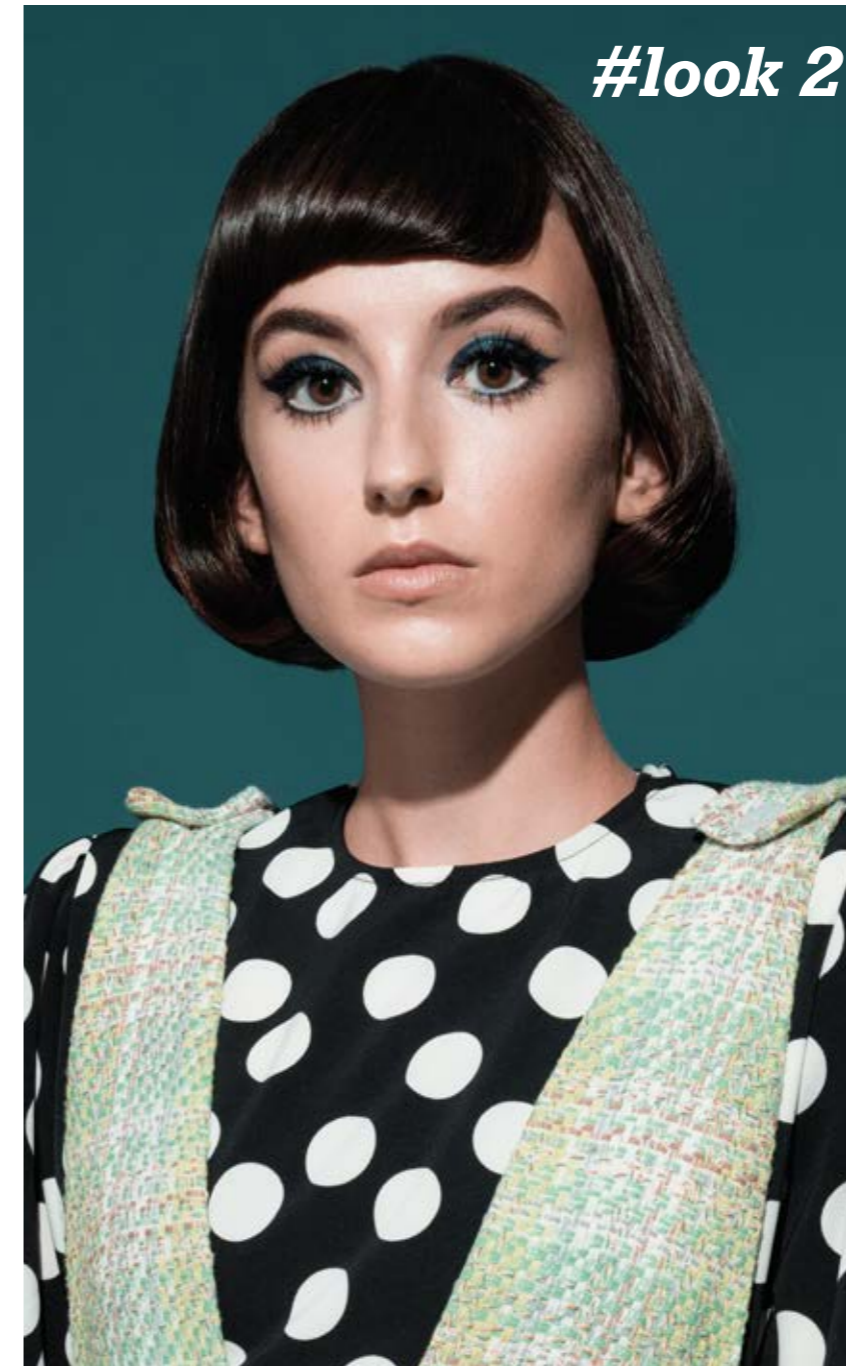
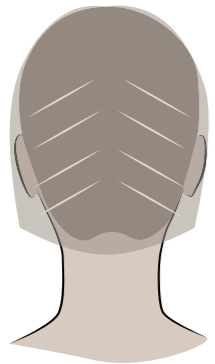
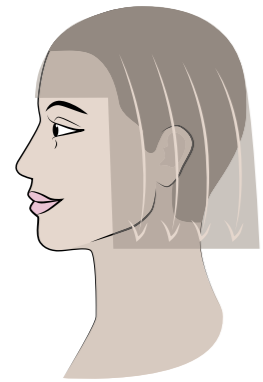
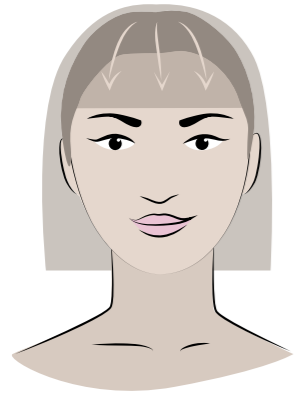
A collection that reaffirms what we are: **CUT, COLOUR AND STYLE.**

BETTY



The  
**LONDON**  
**CLUB** HAIR CUT & COLOUR  
COLLECTION  
AUTUMN/WINTER 2021

# BETTY



## CUT

With the hair dry and in its natural parting, cut the length and the fringe marking a horizontal line with the clippers.

## COLOUR

Foil teased babylights on the mid-length and ends: 20g High Platinum bleach + 40g peroxide 10 vol.

**Colour roots:** 60g Lumière 5.46 + 60g peroxide 30 vol.

**Colour mid-length and ends:** 60g Lumière 7.46 + 60g peroxide 20 vol.



## MAKE-UP

### FACE:

- Prebase facial Primer Treatment Perfect.
- BB Cream Matt nº 20.
- Paleta color Face Smart Palette.

### EYES:

- Corrector de ojeras fluido Perfect Concealer Medium.
- Sombra de ojos compacta Palette Strass Nº 102.
- Delineador de ojos Precision Liner Bold.
- Máscara de pestañas Push Up Waterproof.
- Lápiz de cejas Wow my Brows! 22 Taupe.

### LIPS:

- Perfilador de labios Lip Liner Contour, 01 Dark Nude.
- Barra de labios Luxury 207 Dark Nude.

## WASH

- Champú antipolución Micellar Organic Care.
- Champú Original Organic Care.



## CONDITIONING

- Mascarilla Nutritum Organic Care.
- Aceite esencial de Naranja Organic Care.



## DRYING

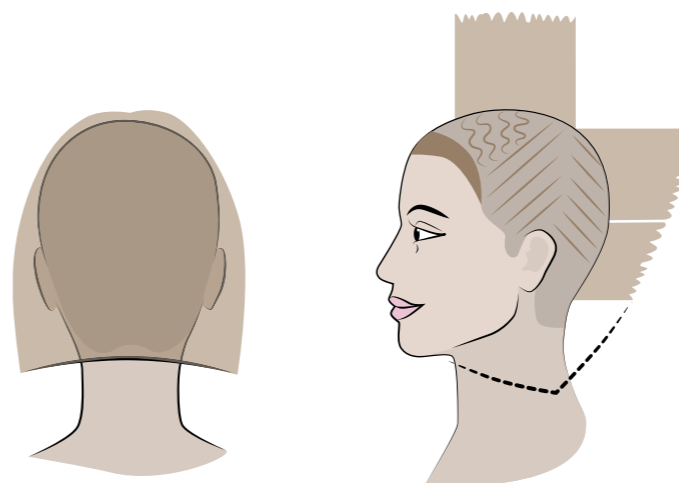
- Pomada capilar Infinium Organic Care.
- Concentrado cicatrizante reparador Power Oil Organic Care.



## STYLING

- Concentrado cicatrizante reparador Power Oil Organic Care.
- Laca capilar ecológica Flexible Fix Organic Care Extra fuerte.





## CUT

Mark the length and cut convex layers. Cut the layers at an interior angle and texturise the ends with thinning scissors to lighten the texture.

## COLOUR

Cut contouring into the fringe. Babylight and tease the upper area, and the rest with weave highlights on a diagonal.

High Platinum cream bleach 1+2 10 vol.

**Shade:** 50g 9.2 Organic Care + 10g 9.01 Organic Care + 120g Organic Care treatment lotion 10 vol.



## MAKE-UP

### FACE:

- Prebase facial Primer Treatment Perfect.
- Base de maquillaje Double Skin color 1N Vainilla.
- Paleta color Face Smart Palette.

### EYES:

- Corrector de ojeras compacto Perfect Concealer Light.
- Delineador de ojos Precision Liner Bold.
- Máscara de pestañas Push Up Waterproof.
- Lápiz de cejas Wow my Brows! 21 Dark Blonde.

### LIPS:

- Perfilador de labios Lip Liner Contour, 01 Dark Nude.
- Barra de labios Luxury 207 Dark Nude.

## WASH

- Champú antipolución Micellar Organic Care.
- Champú protector cabellos opacos o teñidos Gold Protein antiencrepamiento.



## CONDITIONING

- Mascarilla capilar multifuncional cabellos opacos o teñidos Gold Protein.



## DRYING

- Crema de peinado cabellos opacos o teñidos Gold Protein antiencrepamiento.



## STYLING

- Magic Duo antiencrepamiento.
- Spray capilar voluminador Hair Spray.
- Laca capilar ecológica Flexible Fix Organic Care Extra fuerte.



KATIE



The  
**LONDON**  
**CLUB** HAIR CUT & COLOUR  
COLLECTION  
AUTUMN / WINTER 2021

## WASH

- Champú antipolución Micellar Organic Care.
- Champú Original Oil Organic Care.



## CONDITIONING

- Mascarilla Nutritium Oil Mask Organic Care.



## STYLING

- Concentrado cicatrizante reparador Power Oil Organic Care.
- Laca Clean Fixative Botanic Strong.



## MAKE-UP

### FACE:

- Prebase facial Primer Treatment Perfect.
- Base de maquillaje Perfect Foundation 10 Pure.
- Paleta color Face Smart Palette.

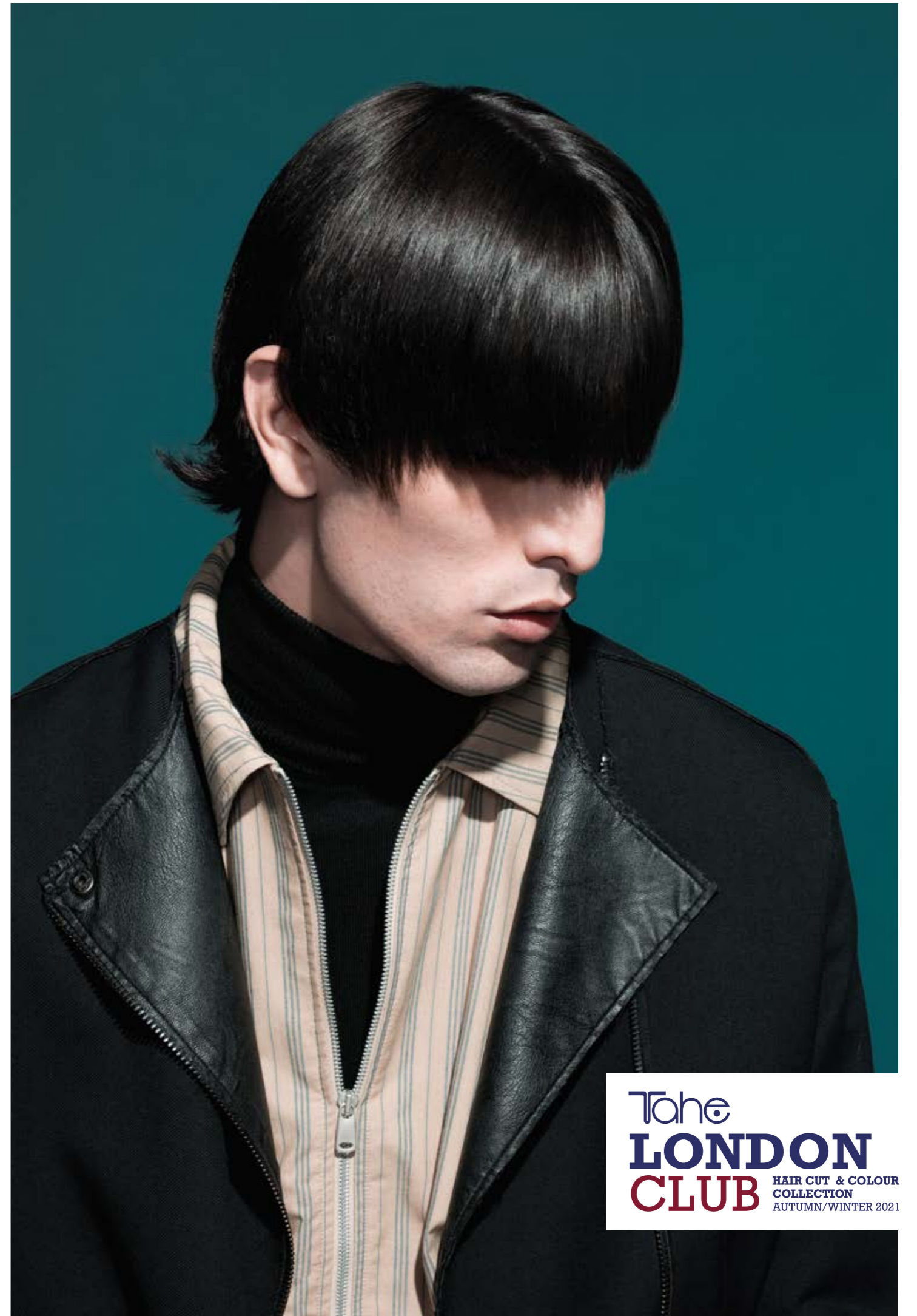
### EYES:

- Corrector de ojeras fluido Perfect Concealer Light.
- Delineador de ojos Precision Liner Bold.
- Barra de labios Luxury 202 Mystic.
- Máscara de pestañas Volumen.

### LIPS:

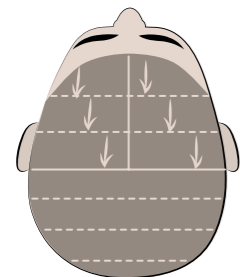
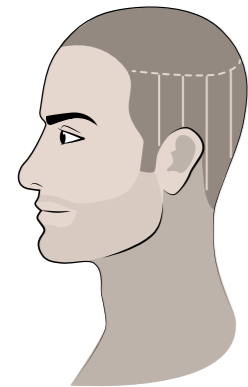
- Bálsamo labial tratante Nature Volume 01 Pure.

JOHNNY

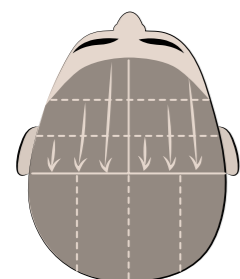


The  
**LONDON**  
**CLUB** HAIR CUT & COLOUR  
COLLECTION  
AUTUMN/WINTER 2021

# JOHNNY



#look 1



#look 2



## CUT

**Look 1:** Section into a horseshoe above the curve of the head. Cut from its base with scissors in sections in the lower and middle areas.

Upper area section in a T shape with a diagonal from ear to ear.

From the diagonal to the crown cut with scissors from its base.

From the diagonal to the fringe, cut with scissors in diagonal sections towards the front, turning the head.

Texturised curls with the feather-styling razor.

**Look 2:** Section into a horseshoe above the curve of the head. Cut with scissors in vertical sections in the lower and middle areas.

Section the upper area into a T shape with a diagonal from ear to ear.

From the diagonal towards the crown connected with feather-styling razor.

From the diagonal towards the fringe take the first guide from the diagonal and cut to the first, towards the first as far as the fringe.

Finish the detail of the cut on dry hair.

## WASH

- **Look 1:** Champú hidratante Low Poo Magic Rizos.
- **Look 2:** Champú uso diario N°101 Fresh Advanced Barber.



## CONDITIONING

- **Look 1:** Mascarilla capilar intensiva 3 en 1 Intensive Mask Magic Rizos.
- **Look 2:** Mascarilla capilar refrescante N°201 Fresh Advanced Barber.



## DEFINITION

- Look 1:** Activador del rizo Magic Rizos.
- Look 2:** Magic Duo antiencrespamiento.



## STYLING

- Look 1:** Sérum capilar reestructurante Magic Rizos.
- Look 2:** Spray capilar de agua marina N°321 Sea Water Advanced Barber. Cera mate N°303 Hold Matt Advanced Barber. Spray capilar definidor N°351 Booster Advanced Barber.

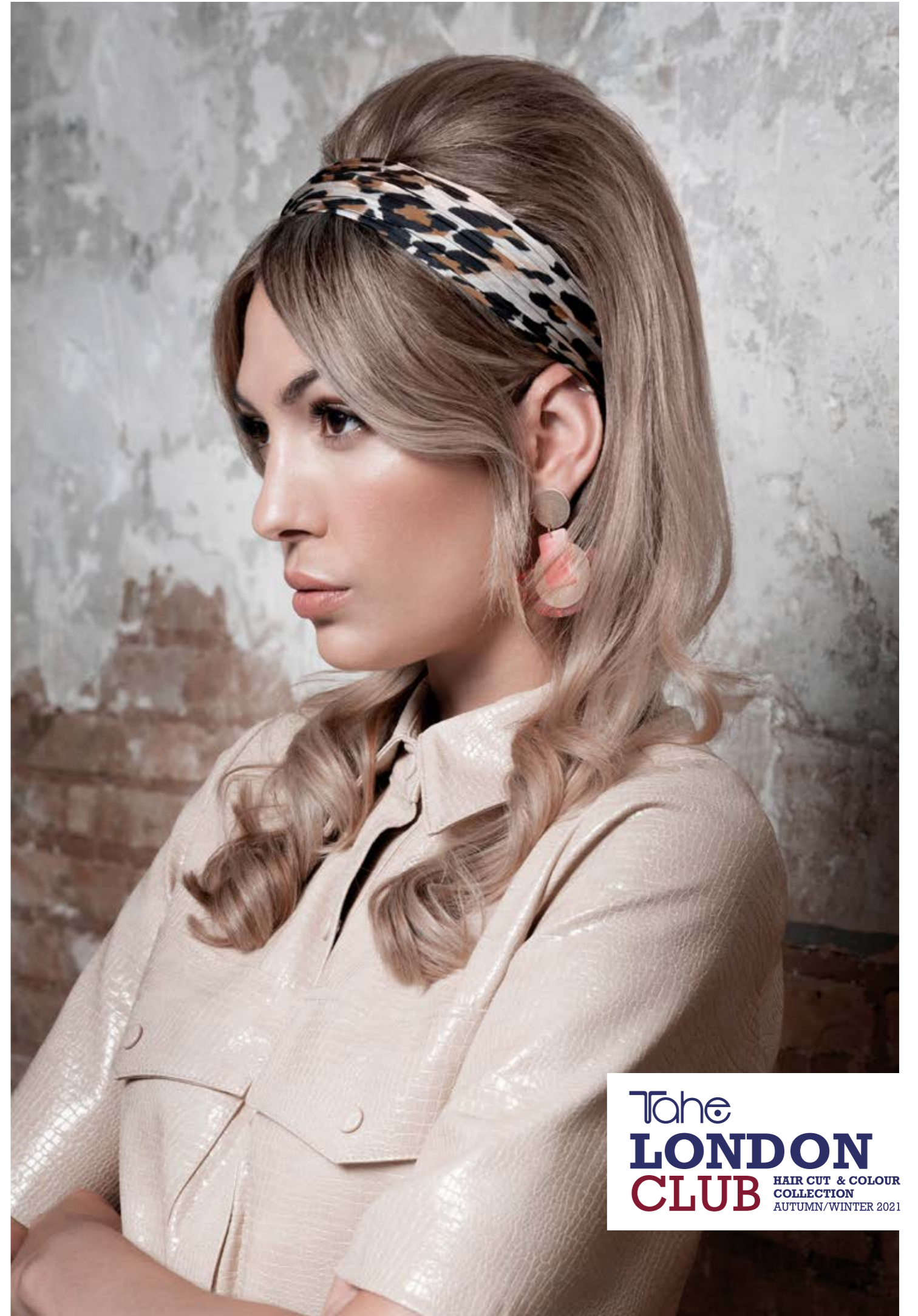


## MAKE-UP

- Base de maquillaje Perfect Foundation 20 Nude.

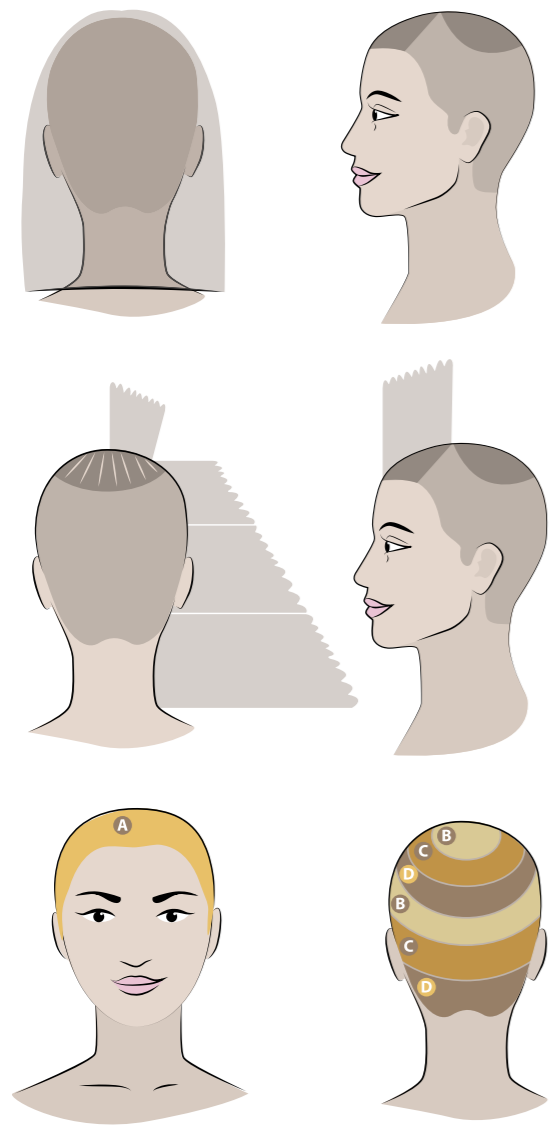


ANNE



The  
**LONDON**  
**CLUB** HAIR CUT & COLOUR  
COLLECTION  
AUTUMN/WINTER 2021

# ANNE



## CUT

- Cut the length straight at a 0° angle.
- Leave a triangular section in the fringe and a circular section in the upper area.
- Cut the rest of the hair at an exterior angle.
- Cut the circular section to make segments using the guide strip on the side.
- Cut the fringe, elevating for a blunt cut.

## COLOUR

**COLOUR A:** Babylight highlights on very fine sections: High Platinum cream bleach 1+2 + peroxide 10 vol.

### SHADING

**COLOUR B:** 60g Organic Care 8.43 + 60g peroxide 10 vol.

**COLOUR C:** 30g Organic Care 8.43 + 30g Organic Care 8.03 + 60g peroxide 10 vol.

**COLOUR D:** 60g Organic Care 8.23 + 60g peroxide 10 vol.



## MAKE-UP

### FACE:

- Prebase facial Primer Treatment Perfect.
- Base de maquillaje Double Skin color 3N Beige.
- Paleta color Face Smart Palette.

### EYES:

- Corrector de ojeras compacto Perfect Concealer Medium.
- Lápiz de ojos Shades of Black Kajal.
- Sombra de ojos compacta Palette Strass nº107.
- Máscara de pestañas efecto Volumen.
- Lápiz de cejas Wow my Brows! 22 Taupe.

### LIPS:

- Perfilador de labios Silk Liner nº 05 Plum.
- Barra de labios Luxury tono 205 Dolce Nude.

## WASH

- Champú Cleansing Total Botanic.
- Champú antiencrespamiento Miracle Gold.



## CONDITIONING

- Cóctail intensivo antiencrespamiento Miracle Gold.



## DRYING

- Crema de peinado antiencrespamiento Miracle Gold.
- Spray Duración Formas Total Form Botanic Styling.



## STYLING

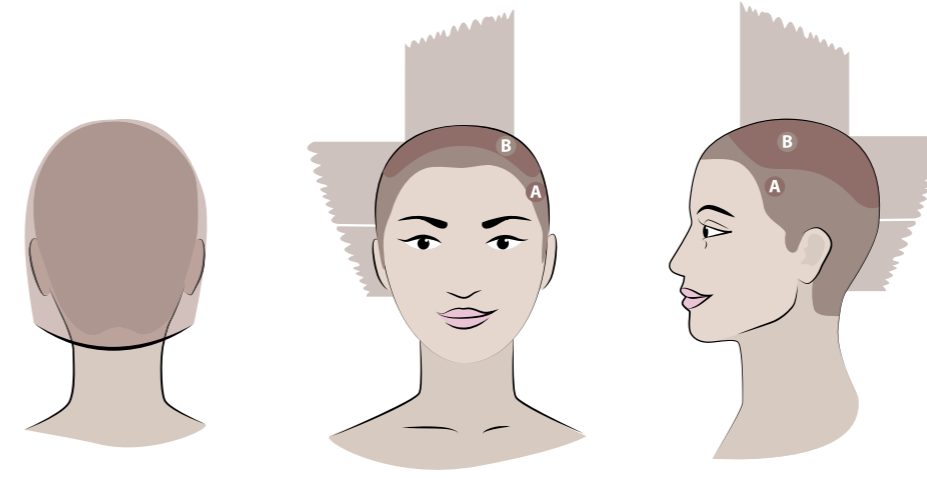
- Laca Efecto Memoria Complex Botanic Styling Fijación 3.



MARY



The LONDON CLUB HAIR CUT & COLOUR COLLECTION AUTUMN/WINTER 2021



### CUT

Mark the length and cut concave layers. Cut the sides and the back area at a slight interior angle.

Take a guide strip and elevate, cutting at an exterior angle perpendicular to the head. Use the fringe to create more length. Texturise the ends.

### COLOUR

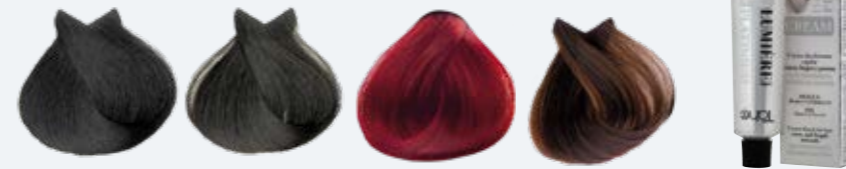
Balayage over the whole head. Accentuate with contouring. Shade with colour B.

**COLOUR A:** 30g Lumière 1 + 30g peroxide 20 vol from roots to ends.

**COLOUR B:** Roots 30g Lumière 3 + 30g peroxide 20 vol.

**COLOUR C:** Foils with 1.5cm separation with High Platinum bleach 20g + 40g peroxide 20 vol.

**COLOUR D:** Shade 20g Lumière 88.66 + 20g Lumière 7.46 + 40g peroxide 10 vol.



### MAKE-UP

#### FACE:

- Prebase facial Primer Treatment Perfect.
- Base de maquillaje Double Skin color 2D Beige Doré.
- Paleta color Face Smart Palette.

#### EYES:

- Corrector de ojeras compacto Perfect Concealer Medium.
- Sombra de ojos Eye Smart Palette.
- Lápiz de ojos Shades of Black Kajal Slick Carbon.
- Máscara de pestañas efecto Volumen.
- Lápiz de cejas Wow my Brows! 22 Taupe.

#### LIPS:

- Labial líquido Velvet Lips 07 Naked.

### WASH

- Champú antipolución Micellar Organic Care.
- Champú Original Oil Organic Care.



### CONDITIONING

- Mascarilla Nutritum Oil Organic Care.
- Aceite esencial de Bergamota Organic Care.

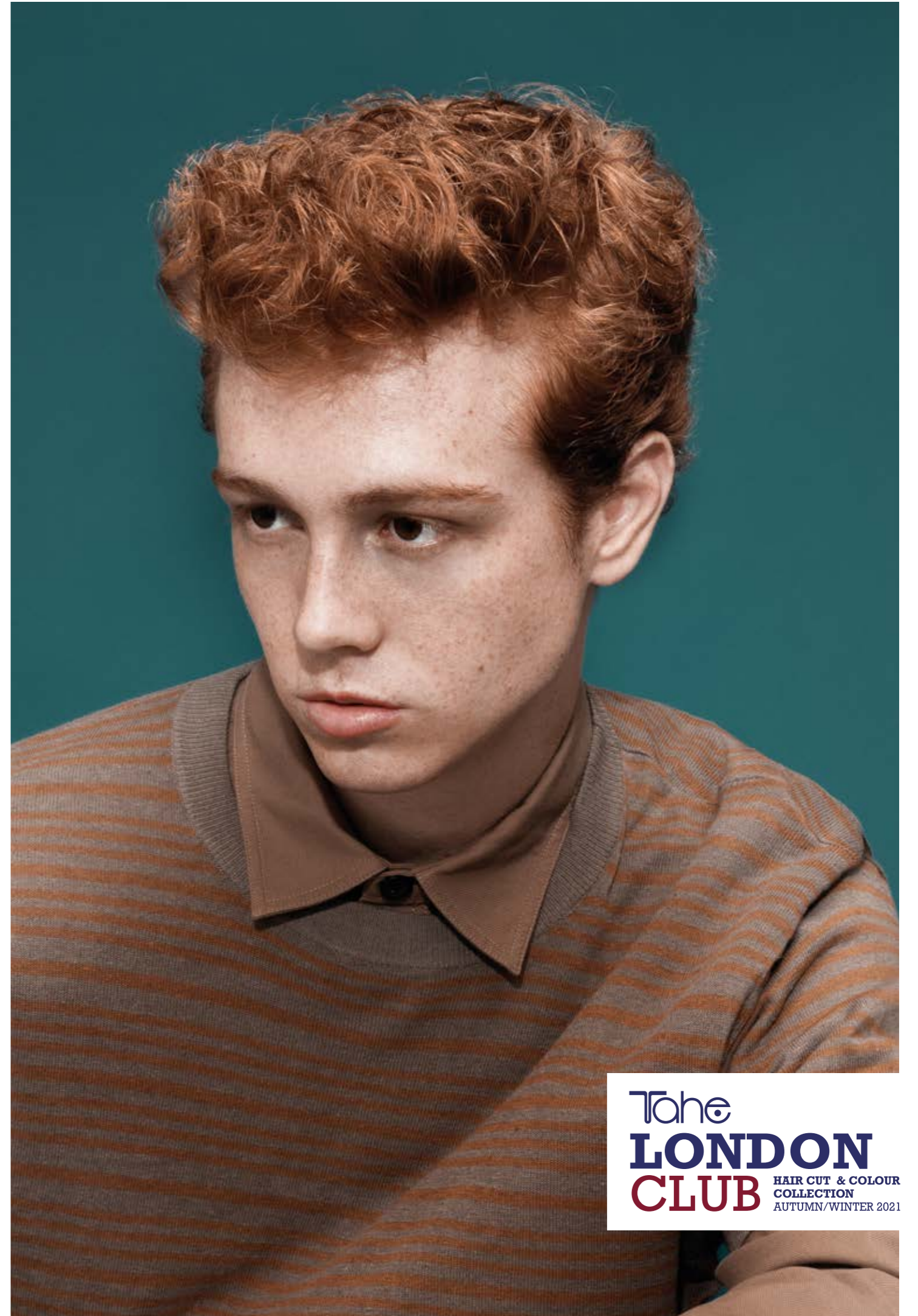


### STYLING

- Activador del rizo Magic Rizos.
- Sérum capilar reestructurante Magic Rizos.
- Laca capilar ecológica Flexible Fix Organic Care Fuerte.

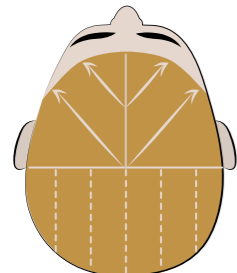
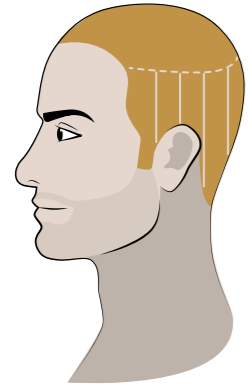


JAMIE

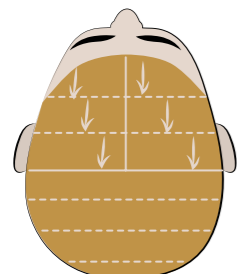


The  
**LONDON**  
**CLUB** HAIR CUT & COLOUR  
COLLECTION  
AUTUMN/WINTER 2021

# JAMIE



**#look 1**



**#look 2**



## CUT

**Look 1:** Section into a horseshoe above the curve of the head.

Cut the lower and middle areas with feather-styling razor in vertical sections from its base.

Make a connection of the middle area or a bridge with a razor.

Section the upper area into a T shape with a diagonal from ear to ear.

From the diagonal to the connected part of the crown with scissors from its base.

From the diagonal to the fringe, diagonal sections outwards, cutting towards the first guide with scissors to create length in the front area and natural movement.

**Look 2:** Section into a horseshoe above the curve of the head.

Cut the lower and middle areas with a razor in vertical sections from its base.

Section the upper area into a T shape with a diagonal from ear to ear.

From the diagonal to the crown cut with scissors from its base. From the diagonal to the fringe cut wide sections towards the previous section.

Texturised curls with a feather-styling razor.

## WASH

**Look 1:** Champú uso diario N°101 Fresh Advanced Barber.

**Look 2:** Champú hidratante Low Poo Magic Rizos.



## CONDITIONING

**Look 1:** Mascarilla capilar refrescante N°201 Fresh Advanced Barber.

**Look 2:** Mascarilla capilar intensiva 3 en 1 Intensive Mask Magic Rizos.



## DEFINITION

**Look 1:** Spray capilar de agua marina N°321 Sea Water Advanced Barber.

**Look 2:** Espuma de fijación fuerte y flexible Magic Rizos.



## STYLING

**Look 1:** Spray capilar definidor N°351 Booster Advanced Barber.

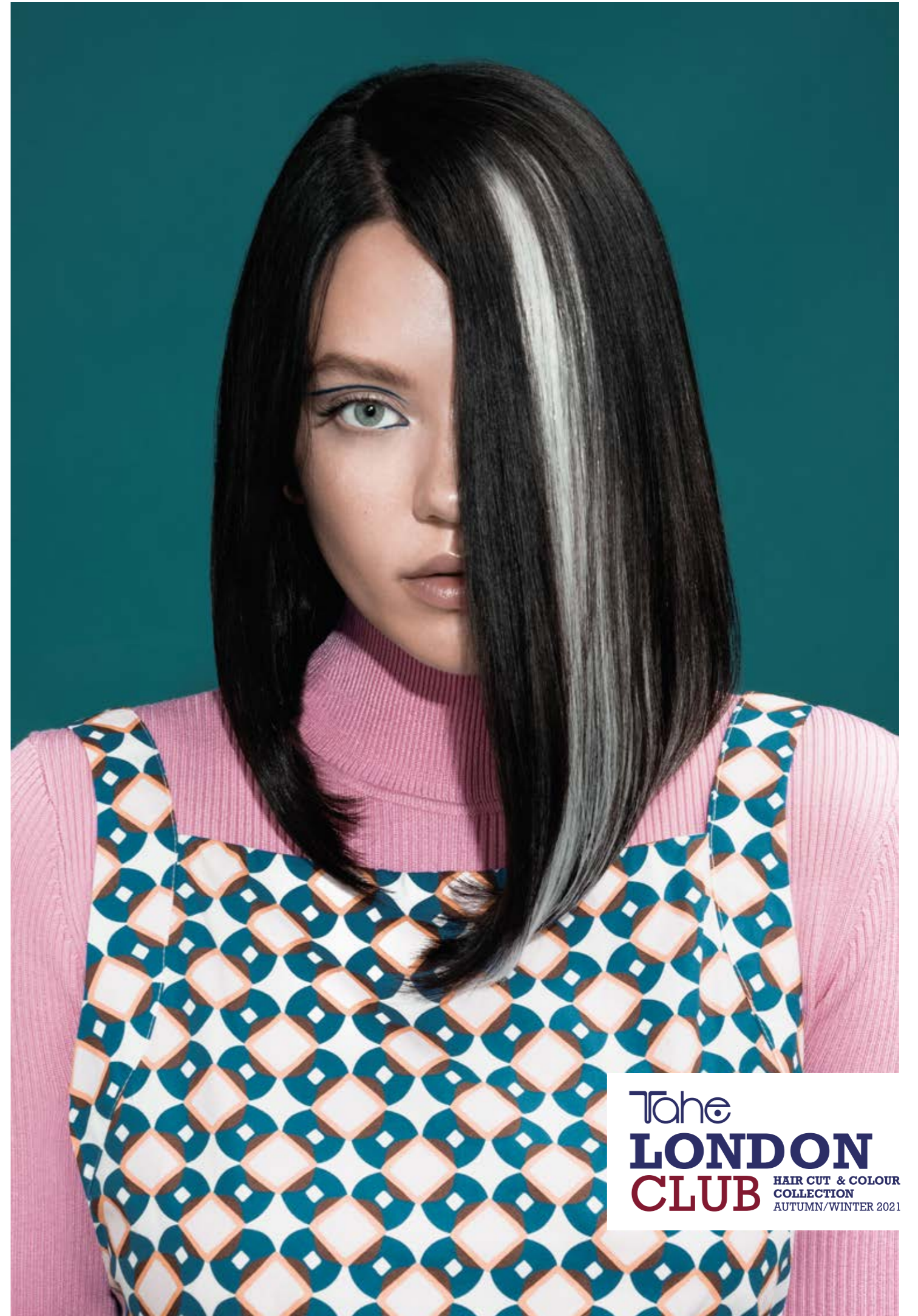
**Look 2:** Sérum capilar reestructurante Magic Rizos.



## MAKE-UP

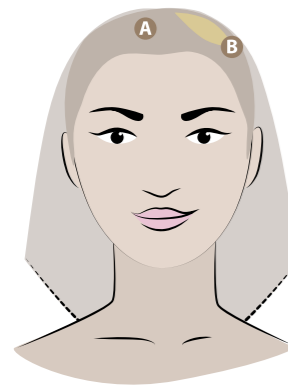
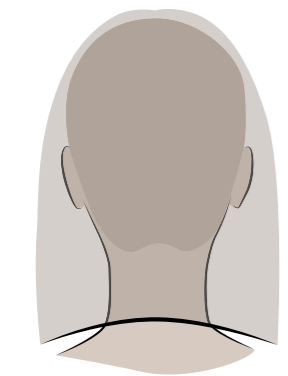
- Base de maquillaje Perfect Foundation 20 Nude.

KATIE



The  
**LONDON**  
**CLUB** HAIR CUT & COLOUR  
COLLECTION  
AUTUMN/WINTER 2021

# KATIE



## CUT

Mark the length with a convex cut.  
Soften the texture with a subtle elevation for the ends.

## COLOUR

**COLOUR A:** 60g Lumière Cool 4C + 60g peroxide 20 vol.  
**COLOUR B:** Under colour con High Platinum cream bleach 30g + 45 g peroxide 20 vol.  
**COLOUR C:** Shade silver corrector\*

**\*Master formula:** 9.11 (10g) + 100.01 (10g) + porosity regulator (10g) + peroxide 10 vol (30g)



## MAKE-UP

### FACE:

- Prebase facial Primer Treatment Perfect.
- Base de maquillaje Perfect Foundation 10 Pure.
- Paleta color Face Smart Palette.

### EYES LOOK 1:

- Corrector de ojeras fluido Perfect Concealer Light.
- Delineador de ojos Precision Liner Bold.
- Máscara de pestañas efecto Volumen.

### EYES LOOK 2:

- Corrector de ojeras fluido Perfect Concealer Light.
- Delineador de ojos Precision Liner Superfine.
- Sombra de ojos compacta Palette Strass tono 102.
- Máscara de pestañas Volumen.

### LIPS:

- Labial líquido Velvet Lips 07 Naked.

## WASH

- Champú antipolución Micellar Organic Care.
- Champú Original Oil Organic Care.



## CONDITIONING

- Mascarilla Nutritium Oil Organic Care.
- Aceite esencial de Limón Organic Care.



## DRYING

Acondicionador hidratante sin aclarado  
Radiance Oil Conditioner Organic Care.

**Look 1:** Spray Duración Formas Total Form Botanic Styling.

**Look 2:** Concentrado cicatrizante reparador Power Oil Organic Care.



## STYLING

**Look 1:** Laca capilar ecológica Flexible Fix Organic Care Strong.

**Look 2:** Concentrado cicatrizante reparador Power Oil Organic Care.



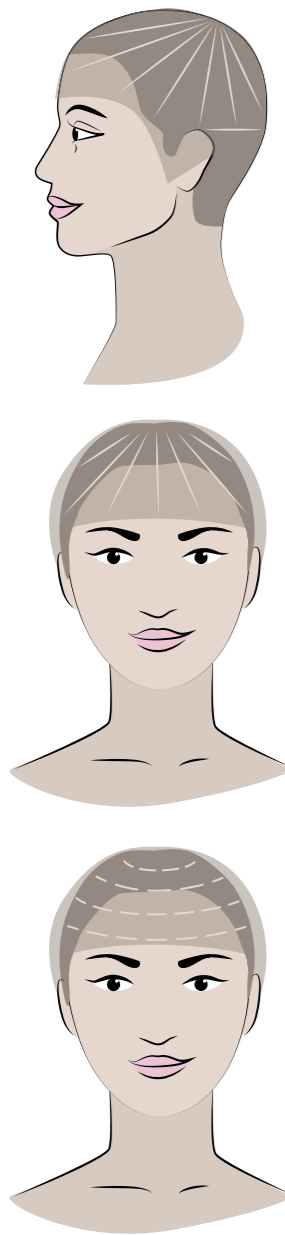
BETTY



The  
**LONDON**  
**CLUB** HAIR CUT & COLOUR  
COLLECTION  
AUTUMN/WINTER 2021



# BETTY



## CUT

Cut into segments aiming for the highest point on the crown. Profile and mark the fringe and above the ears. Cut the back area ascending with clippers, grades 2 and 3.

## COLOUR

**COLOUR BASE:** 660g Lumière 5.46 + 60g peroxide 30 vol.  
Foil weave highlights: 30g High Platinum cream bleach 30g + 45 g peroxide 20 vol.  
**SHADE:** 30g Lumière 6.67 + 30g peroxide 5 vol.



## MAKE-UP

**FACE:**  
- Prebase facial Primer Treatment Perfect.  
- Base de maquillaje Perfect Foundation 20 Nude.  
- Paleta color Face Smart Palette.

**EYES:**  
- Corrector de ojeras fluido Perfect Concealer Medium.  
- Delineador de ojos Shades of Black Kajal.  
- Máscara de pestañas efecto Volumen.  
- Lápiz de cejas Wow my Brows! 23 Brunette.

**LIPS:**  
- Bálsamo labial tratante Nature Volume 01 Pure.

## WASH

- Champú Cleansing Total Botanic.  
- Champú Original Organic Care.



## CONDITIONING

- Mascarilla Nutritium Organic Care.  
- Aceite esencial de Naranja Organic Care.



## DRYING

**Look 1:** Pomada capilar Infinium Organic Care.  
Spray capilar voluminador Hair Spray.  
**Look 2:** Acondicionador hidratante sin aclarado Radiance Conditioner Organic Care.



## STYLING

**Look 1:** Concentrado cicatrizante reparador Power Oil Organic Care.  
**Look 2:** Laca capilar ecológica Flexible Fix Organic Care Ultra Strong.





# Tahe LONDON CLUB

HAIR CUT & COLOUR COLLECTION  
AUTUMN/WINTER 2021

## CREATIVE TEAM

---

BETTY: Raquel Corchero @[raquelcorchero\\_](#)

KATIE Y SUSAN: Santi García @[santigarcia.estilista](#)

JOHNNY & JAMES: Paco López @[thebarbershopbypacolopez](#)

ANNE & MARY: Yolanda Gil @[estilista.yolandagil](#)

MAKE-UP: Consuelo Ortiz @[consueortizmakeup](#)

PHOTOGRAPHY: David Arnal @[davidarnalteam](#)

STYLING: Eunice Mesa @[taller.rent.space](#)

ARTISTIC DIRECTION: Jose Ferrer @[jose\\_\\_ferrer](#)



Tahe  
**LONDON**  
**CLUB** HAIR CUT & COLOUR  
COLLECTION  
AUTUMN/WINTER 2021

BEAUTIFYING YOUR LIFE

     tahe.es